



01253 392179



admin@layton.blackpool.sch.uk



Layton Primary School

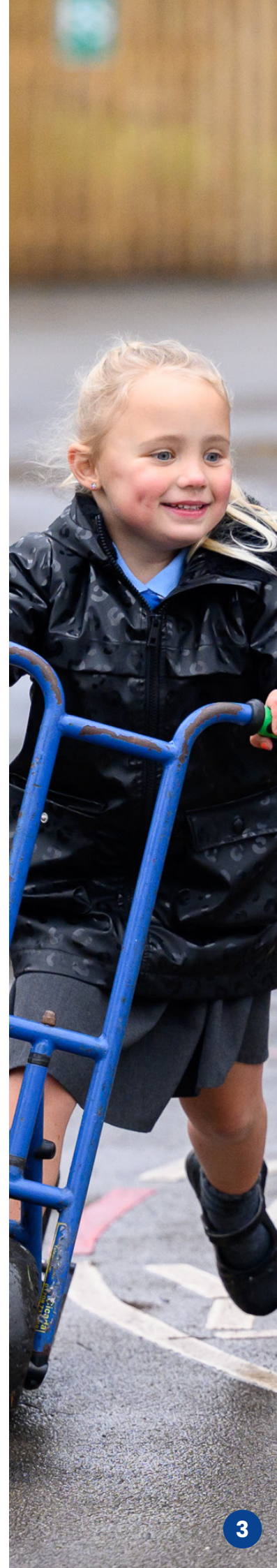
School Brochure 2025/26

Growing Great Minds Together



Contents

Head Teacher Welcome	4
Our School Ethos	5
Meet Our Leadership Team	6
Our Vision	7
The Curriculum	8-9
Admissions	10-11
The School Day	12
Before/After School Hours & Clubs	13
School Uniform	14-15
Safeguarding	16
How We Communicate	17
How To Get To Us	18



Head Teacher Welcome



A warm welcome to Layton Primary School. Our aim is to enable the whole school community to develop and grow together to ensure our pupils can be the best they can be, whatever their talents. Here, we live up to our motto in all our work - "Growing great minds together" in each and every curriculum subject.

Our values focus on developing the skills of successful learners who will need these skills not just in school, but throughout their lives. The schools' values known as The 5Rs, run through all aspects of our work in school.

Our dedicated team is committed to these values to ensure all pupils, regardless of need, to become successful pupils and learners who thrive each and every day in and out of school.

These values ensure we maintain a successful school. Published results have been and remain excellent, significantly above local and national averages, and the school has enjoyed successful Ofsted inspections over a long period of time. The website contains additional information and is a snapshot of how we live our values in practice.

We warmly invite you to see a more complete picture by visiting our school to understand our ethos, our environment, our curriculum and the importance we place on each and every child.

We look forward to seeing you soon.

Mr Jonathan Clucas
Head Teacher



Our School Ethos

Layton Primary School is a vibrant and progressive learning environment where every child is valued, supported, and encouraged to thrive.

At the heart of our ethos are the **5Rs: Relationships, Resilience, Risk-taking, Reflective and Resourceful.**

Relationships

Learners who have strong relationships balance self-reliance with sociability and empathy. They collaborate with others to support their own and others' learning.

Risk-taking

Learners who take risks see opportunities to learn rather than obstacles; they are unafraid to try something new.

Resilience

Our vision is to develop children who thrive when challenged, see failures as opportunities to learn and enjoy circumstances where learning is hard.



Reflective

Being reflective is the ability to adapt when learning, to change direction, to know when learning is taking place and when it is not.

Resourceful

Resourceful learners understand what they need to do, and where and who they need to go to in order to maximise their learning opportunities.

Meet Our Team

Senior Leadership Team



Mr Clucas
Headteacher



Mrs Scott
Deputy
Headteacher



Mrs C Rollinson
Assistant
Headteacher



Miss Owen
SENDCo



Mrs Sheldon
School Business
Manager

Governors

Mr Roy Fisher	Chair Governor
Miss Sarah Royston	Staff Governor
Mr Mica Goldstone	Parent Governor
Mr Stephen Shaw	Vice Chair Governor
Mr Mark Smith	Local Authority Governor
Mr Peter Rumley	School Governor
Mr Dan Jones	Parent Governor
Mr Frazer Rogers	Parent Governor

Safeguarding & Support

Mrs Dunn	Safeguard Lead
Mrs Sayers	Family Engagement Officer
Miss Taylor-Clarke	Family Engagement Officer
Miss Law	Family Engagement Officer
Miss Horton	Learning Mentor
Ms Thompson	Learning Mentor
Ms Elliott	Learning Support & Speech & Language Therapy
Teddy	Therapy Dog

PPA Teachers

Mrs Butterworth	Mrs Dixon	Miss Rainford
Mrs Carolan	Miss Bunce	Mrs J Roillinson

Teachers

Mr Declan Boyle	Teaching, Learning & Curriculum Lead
Mrs Metcalf	Foundation Class Teacher/Team Leader
Mrs Hudson	Foundation Class Teacher
Mrs Barker/Mrs Butterworth	Foundation Class Teacher
Miss Knapman	Year 1 Class Teacher/Team Leader
Mrs Shaw	Year 1 Class Teacher
Miss McAvoy	Year 1 Class Teacher
Mrs Griffiths	Year 1 Class Teacher
Mrs Nutt/Miss Bunce	Year 2 Class Teacher/Team Leader
Miss Redhead	Year 2 Class Teacher
Mr Newcombe	Year 2 Class Teacher
Miss Dyer	Year 3 Class Teacher/Team Leader
Miss Brindle	Year 3 Class Teacher
Miss Brookhouse	Year 3 Class Teacher
Mrs Poole/Mrs J Rollinson	Year 4 Class Teacher/Team Leader
Mrs Fogg/Mr Boyle	Year 4 Class Teacher
Mrs Paul	Year 4 Class Teacher
Mrs Gladwin	Year 5 Class Teacher/Team Leader
Mrs Conuel	Year 5 Class Teacher
Miss Holdsworth	Year 5 Class Teacher
Miss Domics	Year 6 Class Teacher/Team Leader
Mrs Blight-Skipp	Year 6 Class Teacher
Miss Murphy	Year 6 Class Teacher

The Layton Primary School team is made up of many dedicated staff members.
For a full list, please visit our website.

“Layton is a place where I feel safe because I know all the grown ups care about me and listen to me. Layton is the best school in the neighbourhood and I would never want to go anywhere else.”

- Holly, Year 5



Our Vision

When your child starts at Layton, it is the beginning of a seven year journey with us and a partnership with yourselves as parents. We aim to ensure all of our children develop and nurture their curiosity and natural desire to learn more about the world around them.

We are passionate about education, learning and teaching. Our vision, our curriculum, our ethos and our plans for the future are all designed to ensure the best possible experience within our classrooms for each and every child.

From the moment children start school, we immerse and surround them with experiences to learn, grow and develop alongside their peers. We provide a wealth of support across Foundation Stage to ensure our pupils get the very best start at school, and work to ensure they develop the skills and learning habits to develop quickly.

As our children continue their journey through school, we continue to ensure they have access to: high-quality teaching; experiences which broaden their outlook; a closely linked and intertwined curriculum and a wealth of experiences to ensure a full, broad and balanced education in all subjects. We will always seek to work in partnership with our parents, carers and the school community. This ensures we “Grow great minds together”.

We have a genuine love for our school vision and the work we do here at Layton; our pupils achieve extremely well during their time with us in national tests, significantly above local and national averages. We have enjoyed consistent success within our Ofsted inspections. We are proud of our pupils and their achievements.

We prepare them well for each step of their educational journey. The work we do each and every day has a tremendous impact on our pupils, and we strive to continually improve to ensure that during the seven years we are privileged to teach your children, so that they build a genuine love of learning.

Our Curriculum

Our aim for our teaching and learning curriculum at Layton Primary School is that children are given opportunity to excel in all areas. We offer a broad and balanced curriculum whereby we encourage children to think deeply and richly within the subjects which they study.

We teach the National Curriculum in all subjects, which is tailored to the needs of the children in our community and builds on skills year upon year, both academically and in creative subjects. Our school was last inspected by Ofsted in July 2024, and the report confirmed that the school continues to be judged Outstanding. This is following a full inspection in October 2017, where the school was awarded the highest grade.

Challenging Every Learner

We value rich and deep thinking and will engage children in tasks to develop their thoughts and apply their knowledge. There is an ambitious curriculum for each and every one of our pupils which aims to develop their abilities in each area.

A high standard of achievement is encouraged in all subjects - we are ambitious for all of our children and believe in their abilities. It is appreciated that some children experience difficulties and wherever necessary, additional support is provided and given.



Inclusive & Supportive

Some children will be identified as having Special Educational Needs (SEN) and in partnership with parents and carers, will be brought to the attention of our SENDCo (Special Educational Needs and/or Disabilities Co-ordinator).

Religious Education is based on the Lancashire syllabus. Each half term the children are presented with a reflective question to provoke thought and discussion about different religions.

A Rich, Diverse Education

During assemblies, children learn about British Values as part of our moral, social, spiritual and cultural curriculum.

The chosen Modern Foreign Language (MFL) is French which is taught throughout KS2. The PSHE and RSE curriculum are taught as stand alone lessons and through other subjects to explore cross-curricular opportunities.

A specialist music teacher provides lessons throughout school whilst Blackpool Music Service provide opportunities for the children to access a range of instrumental tuition in drums, violin, keyboard and recorder.

We are currently an Apple Distinguished School and place high value on using ICT to support learning development.





School Admissions

Foundation Stage

Layton Primary School offers 90 places for children in Foundation Stage. These places are offered to children who have turned 5 years of age in their first academic year which runs from 1st September to 31st August. We would recommend that you apply early for places at Layton Primary School as we are a popular school in the locality and our places are filled quickly. The details on how to apply for a school place in Blackpool can be found on the Blackpool Council website.

Parents/carers who have received an offer of a place for their child will be provided with lots of information about starting school with possibilities of events to attend, online videos and resources, and of course the ability to call school and ask questions.

Parents will be asked to complete a Starting School Information form, so that we can get all the information about the child, prior to starting.

Children will be invited into school so that they can see their classroom, meet their teachers and fellow pupils. Parents can stay in school during this time at our 'Stay and Play' sessions, usually held in the July prior to the September start. Settling into school life has been explained on the page prior regarding Foundation's admission.



In-Year Admissions

If you move to the area or want to change your child's school, in-year admission applications are made through the Local Education Authority. This process is also managed by Blackpool Council and information on this can be found on the Blackpool Council website.

Children who join school mid-term will normally have a brief induction to the school, whereby: Parents will be given information about the school and asked to complete a school admission form (on our school website in School Information/Admissions & Inductions).

On return of the completed form, parents and children will be invited for a show-round of the school, so they get a taste of school life. Parents will be notified as soon as possible of the proposed class teacher and also agree on a start date for the child to start. This is normally the first day of the school term.

The child will start in school and a 'friend' will be allocated in class to look after the new pupil and all of our children will make your child feel welcome and part of the Layton family.



The School Day

Children may come into school from 8:40am and are able to have a breakfast item if they wish (Through the Blackpool Council breakfast scheme). Registers are taken at 8:55am prompt. The school day finishes at various times from 3:10pm to 3:20pm depending on the child's year group.

Organisation Of Classes

Layton Primary is a mixed non-denominational Primary School catering for children within the age range of 4 years to 11 years. There are three classes in each year group in school and we aim for a maximum class size of 30.

School Meals

Our school meals are provided by Lancashire Catering who have several healthy and tasty options for pupils to pre-select with their parent/carer the week prior. Alternatively, you may choose to send your child with a packed lunch.

Pupils in Foundation - Year 2 inclusive can have a school meal free of charge through the Universal Free School Meals scheme. Further information can be found on our website in the parents section.

For children who choose to have a school meal, Parents and Carers must book their choice using ParentPay. There is a selection of healthy meals available to all year groups. Parents and Carers will be provided with the information about ParentPay once their child is enrolled with us.

You may be eligible for your child to have a **free school meal if you are in receipt of income support**. Please visit the council website to find out more.

Before & After School Hours

As a part of our extended schools offer, Layton Primary School runs both a Breakfast Club and After School Club, every Monday to Friday in term time.

Both clubs are very popular and can sometimes have waiting lists so it is imperative to book. There is always a wide range of activities on offer and children are provided with a drink and snack. Please enquire at the school office if you are interested in booking a place for your child.

Please see the session times available and the prices below.

Breakfast Club

Opening time: 7:30am
Price per session: **£4.00 per child**

After School Club

This club runs from the end of the school day until 5:30pm
Price per session: **£7.00 per child**

Extra-Curricular Activities

We offer a wide range of extra-curricular activities that children can join. These normally run after school for about an hour or during dinner times. Below are examples of the clubs currently on offer:

School Choir Taekwondo Dance Club Lego Club
Gardening Club Arts & Crafts Club



School Uniform

We encourage all our pupils to have a high standard of appearance and we pay attention to nails, shoes and cleanliness in general.

All pupils must wear smart, black, sensible school shoes. Trainers, boots (other than ankle boots), or shoes with a heel are not suitable for school. We appreciate that robust shoes can be expensive, however these are necessary when walking to and from school, and particularly on rainy days.

We would also like to highlight that should you wish for your child to wear a shirt, they must accompany this with a tie.

You do not need to purchase a book bag or water bottle for your child. These are provided to all children when they start in September.

Please note: Items with a stitched logo are not compulsory.
Remember to clearly name all items of clothing.

Where can I buy School Uniform?

Uniform is readily available from most major supermarkets at very reasonable prices. Ragamuffins in Layton and Bispham Clothing stock our uniform including items with the school logo on if you prefer (this is not compulsory). Please note that only Ragamuffins stock our white PE top with the Layton logo and the Layton tracksuit.

Wearing a uniform allows all pupils to come to school as equals, and takes pride in their appearance and the school; there are many different values associated with this which will prepare them for later life.





School Uniform Requirements

School Uniform	Description
Trousers (Long & Short)	Grey
Shirt & Tie or Polo Shirt	Light Blue
Tie	Grey & Royal Blue
V Neck Pullover	Royal Blue
Skirt or Pinafore Dress	Grey
Blouse	Light Blue
Cardigan	Royal Blue
Dress (Summer)	Blue & White
Shoes	Black Smart Shoes
Socks	Grey



PE Kit Requirements

PE Kit	Description
T-Shirt	Plain White or White with Layton Logo
Shorts (Summer)	Royal Blue
Tracksuit	Plain Blue or Black Tracksuit Bottoms or Leggings with Plain White T-Shirt and School Jumper/Cardigan. An Embroidered Layton Tracksuit is also available.
Footwear	Black Trainers



Safeguarding

Layton Primary School is committed to safeguarding and promoting the physical, mental and emotional welfare of every pupil, both inside and outside of the school premises. We implement a whole-school preventative approach to managing safeguarding concerns, ensuring that the wellbeing of pupils is at the forefront of all action taken.

- We ensure that members of the governing board, the headteacher and staff understand their responsibilities under safeguarding legislation and statutory guidance, are alert to the signs of child abuse, and know to refer concerns to the Designated Safeguard Lead (DSL).
- We teach pupils how to keep themselves safe and recognise behaviour that is unacceptable.
- We identify and make provision for any pupil that has been subject to, or is at risk of, abuse, neglect, or exploitation.
- We create a culture of safer recruitment by adopting procedures that help deter, reject or identify people who might pose a risk to children.

Our DSL is Mrs Sarah Dunn. The DSL and the wider Safeguarding and Family Engagement Team will deal with all child protection matters.

More information can be found in the school's safeguarding and child protection policy which is available on this website or from the school office. Please visit the Family Engagement Team section on this website to find out more about how we support children and families at Layton Primary School.



boom
reader



ClassDojo



How We Communicate

School Website and Facebook Page

The school website www.layton.blackpool.sch.uk and our Facebook page are kept up to date with all the information about what is going on in our school.

ParentApp Connect

ParentApp Connect system is the main way we communicate with our families and is where we send out letters, newsletters, notifications and event information. In addition, you can tell us about your child's absence and view the school calendar. It is a simple way to keep up to date.

The app is fully secure and GDPR compliant and in order to access the system you need to be first invited by school. You will receive your invite by text or email in September once your child has enrolled full time with us. Simply follow the instructions to download the app and stay in touch.

Class Dojo

In Foundation Stage, parents can communicate directly with their class teacher through the Class Dojo app.

Boom Reader

At Layton Primary School we promote a love of reading through the whole curriculum. We believe the best gift you can give your child is to read with them every day. The record of books read at home and in school is done via the Boom Reader app. When children start in Foundation Stage your class teacher will give your child a blue book bag for bringing books to and from school.

How To Get To Us

School Entrances

We have 3 entrances to school. Most Foundation Stage children enter the school ground via Lynwood Avenue (entrance 1). Alternatively, Foundation Stage can be accessed by walking across the playground from the Eastwood Avenue entrance (entrance 2).

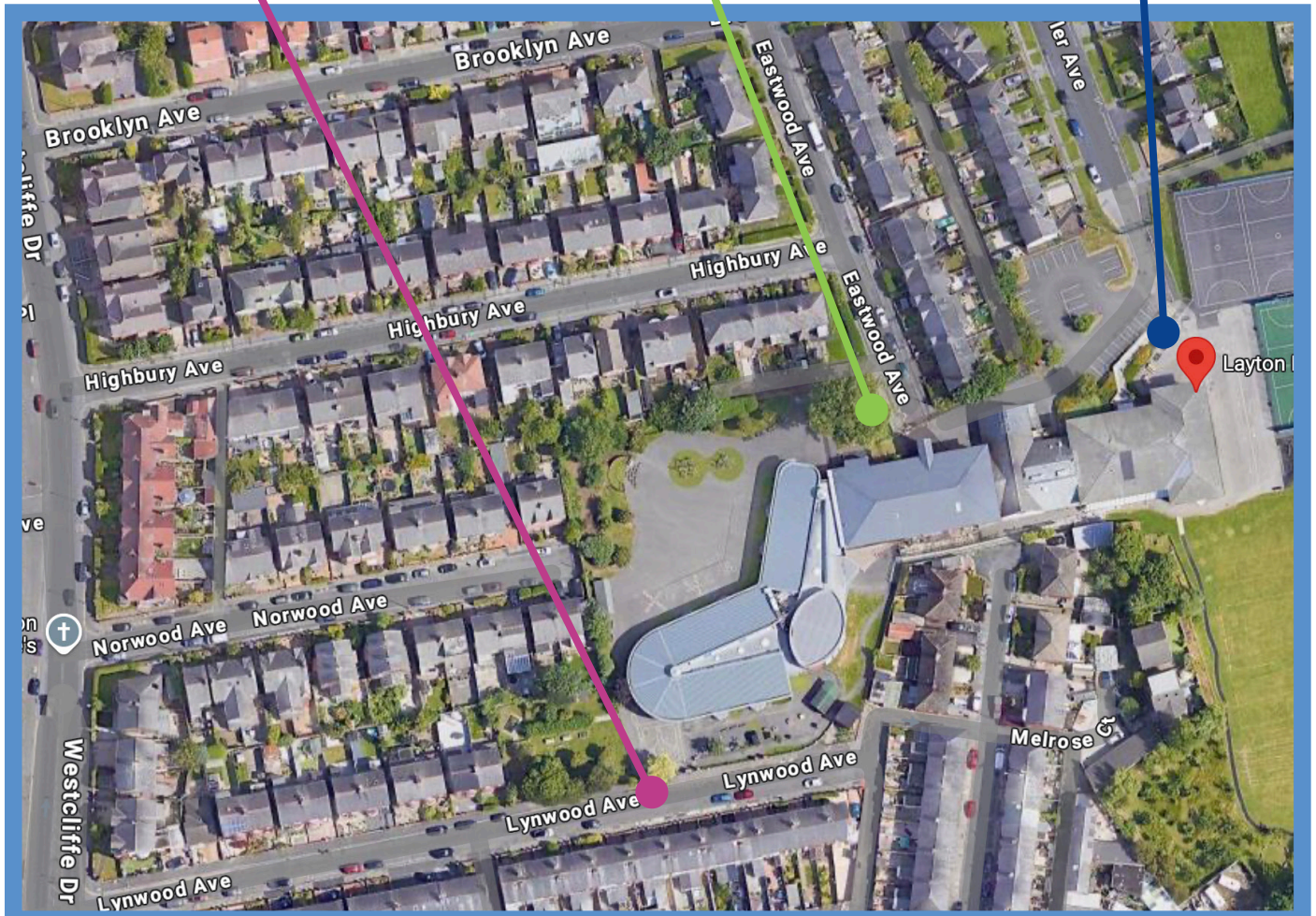
Access to the school office can be made by entrance 3.

(School office access only)

Entrance 1
Lynwood Avenue
KS1 Playground

Entrance 2
Eastwood Avenue
KS1 Playground

Entrance 3
Meyler Avenue
KS2 Playground



“We love our school and the work we do; it has a tremendous impact on our children, and we look forward to welcoming your child to grow and learn together with us.”

- Mr J Clucas, Headteacher





www.layton.blackpool.sch.uk



01253 392179



admin@layton.blackpool.sch.uk